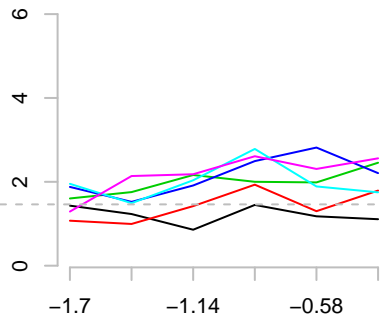


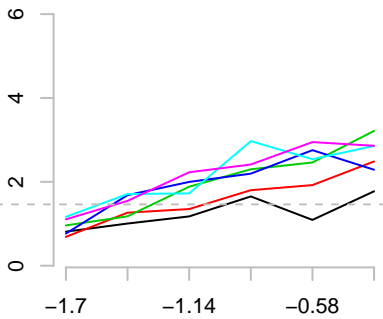
Inter. ordre 2 :  $y = f( p1 | p2 = k )$   
6 niveaux k

-1.7 -1.42 -1.14 -0.86 -0.58 -0.3



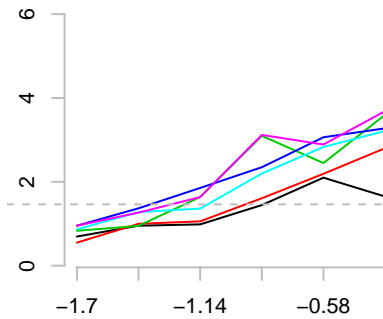
Inter. ordre 2 :  $y = f( p1 | p3 = k )$   
6 niveaux k

5 6 7 8 9 10



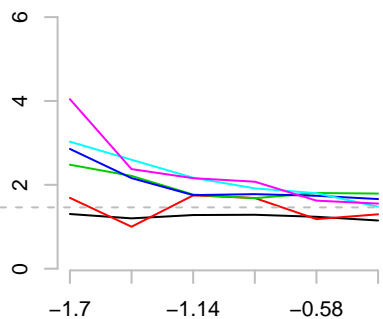
Inter. ordre 2 :  $y = f( p1 | p4 = k )$   
6 niveaux k

0.5 0.6 0.7 0.8 0.9 1



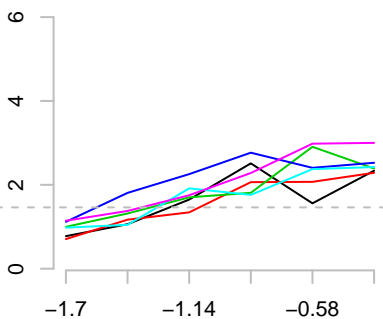
Inter. ordre 2 :  $y = f( p1 | p5 = k )$   
6 niveaux k

0.1 2.08 4.06 6.04 8.02 10



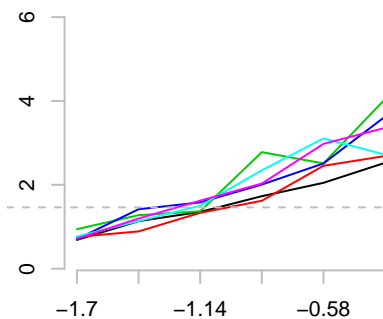
Inter. ordre 2 :  $y = f( p2 | p3 = k )$   
6 niveaux k

5 6 7 8 9 10



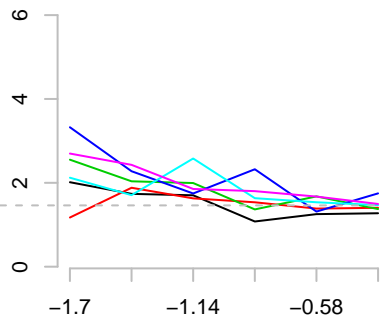
Inter. ordre 2 :  $y = f( p2 | p4 = k )$   
6 niveaux k

0.5 0.6 0.7 0.8 0.9 1



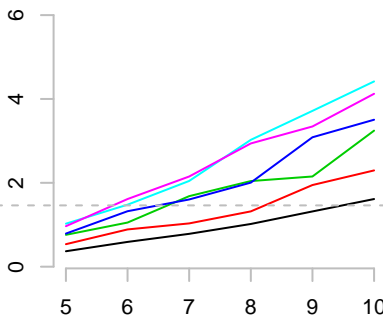
Inter. ordre 2 :  $y = f( p2 | p5 = k )$   
6 niveaux k

0.1 2.08 4.06 6.04 8.02 10



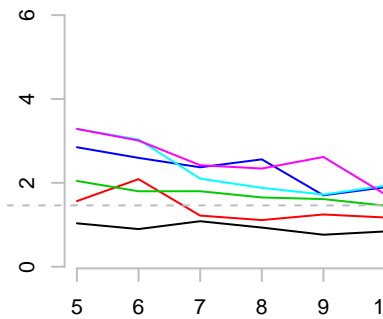
Inter. ordre 2 :  $y = f( p3 | p4 = k )$   
6 niveaux k

0.5 0.6 0.7 0.8 0.9 1



Inter. ordre 2 :  $y = f( p3 | p5 = k )$   
6 niveaux k

0.1 2.08 4.06 6.04 8.02 10



Inter. ordre 2 :  $y = f(p4 \mid p5 = k)$

6 niveaux k

0.1 2.08 4.06 6.04 8.02 10

